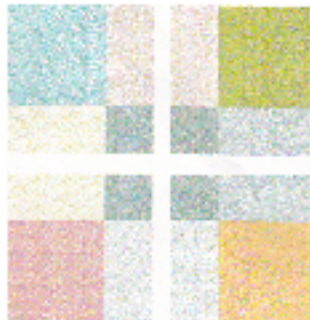




**This picture is not an accurate portrayal of the final quilt. The final product will be 6 squares in each row and 6 rows which will make a 39 1/2 inch top.**

### **Nine to Five pattern**

- 1. You will cut scraps or sets of fat quarters of material 5 inches square (or they are included in this kit). You will need to construct 9 nine-patch blocks which will use 81 5" squares.**
- 2. Construct the nine-patch blocks, making sure that the center square is always the same fabric.**
- 3. Once these are constructed, cut the large nine-patch in half both ways. The squares that result will measure 7 inches square. This will yield 36 Nine to Five patches . See illustration below:**



- 4. Now, flip and flop the blocks and sew them together with 6 blocks per row, 6 rows, then sew the rows together and you're done with the top. The illustration on the top is only a suggestion of how to lay it out. Please feel free to lay them out in any manner that is pleasing to you.**
- 5. Quilt and finish in any manner you wish. Instructions for finishing with the "pillow case" method are included.**